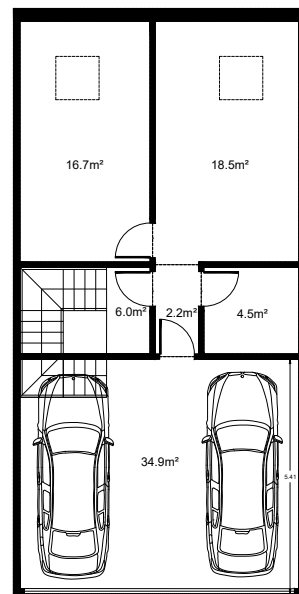
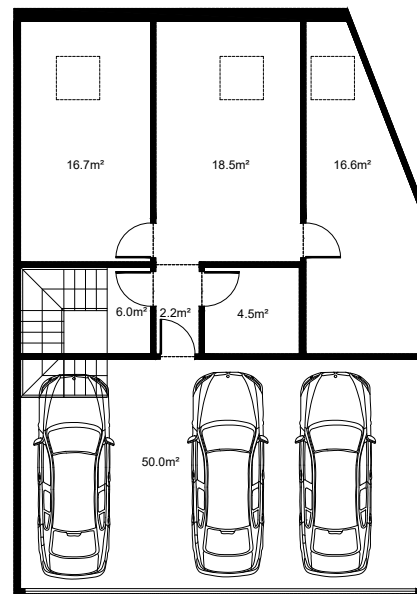


Total metros construidos sotano: 134.0m²



Total metros construidos sotano: 90.9m²



Total metros construidos sotano: 124.3m²

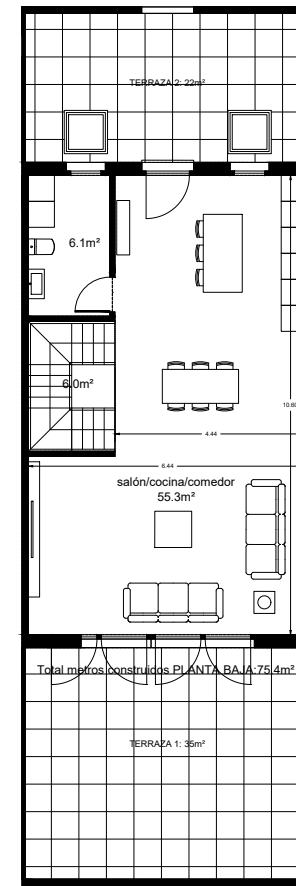
ACCESO DESDE CALLE



CARRIL RODADURA

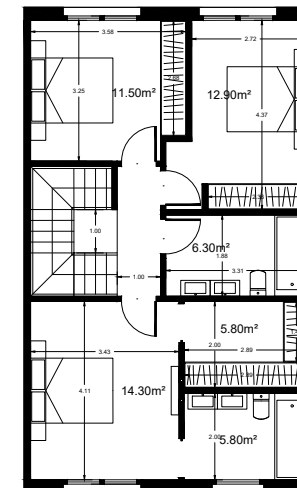
CARRIL RODADURA

CARRIL RODADURA

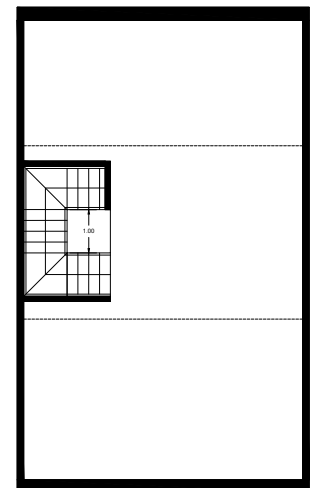


Total metros construidos PLANTA BA: 4:75.4m²

SUR



Total metros construidos PLANTA PRIMERA: 75.4m²



Total metros construidos PLANTA CUBIERTA: 75.4m²